

Expedeon 加入 Abcam

攜手協助您更快更好地達成研究目標

Expedeon 已正式加入 Abcam，旗下所有蛋白質體與免疫實驗研究工具，您都可以透過 Abcam 經銷商伯森生技公司進行產品諮詢與訂購。Abcam 也將聯合 Expedeon 產品核心技術與 Abcam 原有的研發能量，攜手開發出更符合研究人員需求的實驗工具，協助您更快更好地達成目標！以下帶您快速瀏覽新加入 Abcam 的 Expedeon 產品成員：



RunBlue™ precasting gel

- 具有 Bis-Tris 與 TEO-Tricine 兩種蛋白質電泳預鑄膠片選擇。
- 具有出色的蛋白質條帶分辨率，並相容於質譜儀技術 (Mass spectrometry)。
- 膠體強韌，不易撕裂或斷裂，操作更容易。



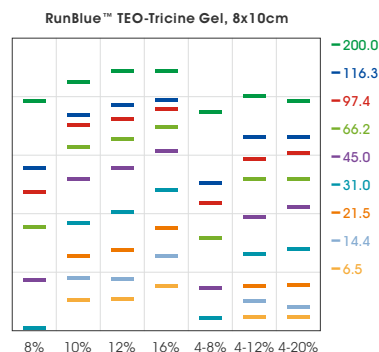
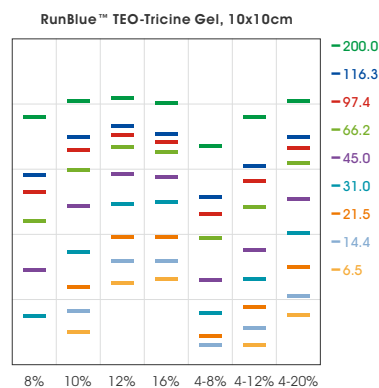
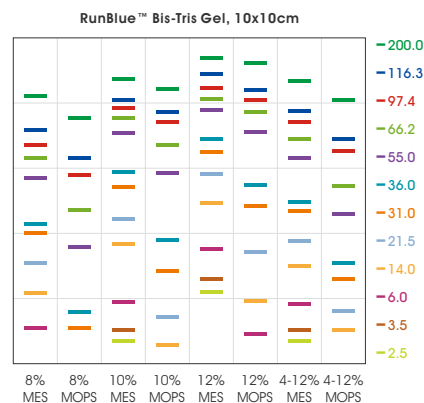
Product	Gel Percentage	12 well	17 well
Bis-Tris Precast Gels - RunBlue™ 10x10cm ❶	8%	ab270021	ab270462
	10%	ab270463	ab270464
	12%	ab270465	ab270466
	4-12%	ab270467	ab270469
TEO-Tricine Precast Gels - RunBlue™ 10x10cm ❶ ❷	8%	ab139591	ab139597
	10%	ab119202	ab139598
	12%	ab119203	ab139599
	16%	ab139592	ab139600
	4-8%	ab119204	ab139601
	4-12%	ab139593	ab139602
TEO-Tricine Precast Gels - RunBlue™ 8x10cm ❸	4-20%	ab119205	ab139603
	8%	ab139594	ab139604
	10%	ab119206	ab139605
	12%	ab119207	ab139606
	16%	ab139595	ab139607
	4-12%	ab139596	ab139609
	4-20%	ab119209	ab139610

- ❶ Compatible with SureLock™ System (Thermo Fisher Scientific, 10x10cm cassette).
- ❷ Also available under 4-20%, 2-well, 10x10cm format (ab270461).
- ❸ Compatible with Mini-PROTEAN® Tetra Cell (Bio-Rad, 8x10cm cassette).



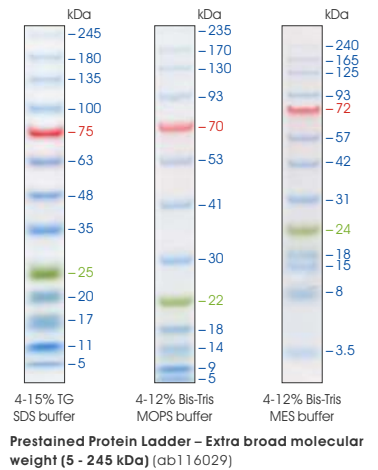
另有小包裝 TEO-Tricine (4-20%, 12-well, 8x10cm) 預鑄膠片套組可供選購，歡迎洽詢伯森業務專員。

Gel Migration Chart



RunBlue™ protein marker and buffers

Type	Product	Cat. No.
Sample Buffer	LDS Sample Buffer (4X) - RunBlue™ (Bis-Tris)	ab270226
	LDS Sample Buffer (4X) - RunBlue™ (TEO-Tricine)	ab119196
Run Buffer	MOPS Run Buffer (20X) - RunBlue™ (Bis-Tris)	ab270225
	MES Run Buffer (20X) - RunBlue™ (Bis-Tris)	ab270224
	Run Buffer (20X) - RunBlue™ (TEO-Tricine)	ab119197
Transfer Buffer	Tris-Glycine Transfer Buffer (10X) - RunBlue™	ab270518
	Tris-Glycine SDS Transfer Buffer (10X) - RunBlue™	ab270227
	Transfer Buffer - InstantBlot (ab270047)	ab270047
Stripping Buffer	Western Blot Stripping Buffer	ab270550
Protein Marker	Prestained Protein Ladder – Extra broad molecular weight (5 - 245 kDa)	ab116029
Others	Antioxidant (800X) - RunBlue™	ab119200
	DTT Reducer (10X) - RunBlue™	ab119199



Amintra® protein A/G and Ni-NTA resin

Product	Binding Capacity	Size Option	Cat. No.
Protein A Resin - Amintra®	> 40 mg Human IgG/ml resin	5, 25, 100 ml	ab270308
Protein G Resin - Amintra®	> 30 mg Human IgG/ml resin	5, 25, 100 ml	ab270309
Ni-NTA Affinity Resin - Amintra®	> 40 mg 6x His-tagged/ml resin	10, 25, 100 ml	ab270549



更多親和性純化產品
GST-, 6X His-, Biotin-
and Strep-tag affinity
purification

Proteoloc™ protease inhibitor cocktail

Product	Size	Cat. No.
Protease Inhibitor Cocktail with EDTA	3 x 1 ml	ab271306
	10 x 1 ml	ab271308
	30 x 1 ml	ab271307

Product	Size	Cat. No.
Protease Inhibitor Cocktail EDTA Free	3 x 1 ml	ab270055
	10 x 1 ml	ab270061
	30 x 1 ml	ab270057

BaseMuncher Endonuclease

- >99% 高純度核酸水解酶。
- 不具蛋白水解活性，專一性水解所有單股、雙股核酸。
- 蛋白質純化利器，可於樣本製備時協助降低樣本黏稠度。

Product	Size	Cat. No.
BaseMuncher Endonuclease	25000 units	ab270049
	100000 units	ab270049



蛋白質/抗體標定試劑



Lightning-Link®
antibody/protein
conjugation kits

高效蛋白質染劑



InstantBlue®
Coomassie
blue stain



完整產品資訊與最新活動訊息，請洽 Abcam 台灣代理 — 伯森生技